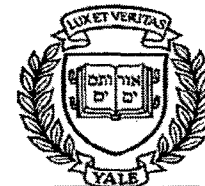


YALE CLUB of THE SUNCOAST blueLines



May, 2008

Volume 5 Edition 6

TERI HANSEN ADDRESSES YALE CLUB ON "CIVILITY"

March 20, Sarasota Yacht Club. Pres. Brian Kelly introduced Teri A. Hansen, President and CEO of the Gulf Coast Community Foundation of Venice, the 46th largest community foundation in the United States and, with assets of \$260 million, the largest in Florida.

It has distributed \$72 million in community grants since 1995. Ms. Hansen, a Santa Monica native with a B.A. in journalism from San Diego State University, began her career as a public affairs officer in the U.S. Air Force and has also completed Harvard Business School's Advanced Management Program. She is a member of numerous local and national boards devoted to philanthropy, economic development, the arts, and community service. She assumed her present Foundation responsibilities in 2002.

In previous local speeches, Ms. Hansen has demonstrated that good community membership directly affects our wealth, our safety, and even our personal health. "We are rich because we are generous, not the reverse," she observed at a January 2007 luncheon meeting of the Ivy League Club, citing the benefits of community endowments as far back as one for young artisans established two centuries ago by Benjamin Franklin.

In her speech to our Club, entitled "Civility: Because It Really Matters", Ms. Hansen directed our focus to the behavior of individuals. She observed that changes in society have led to greater need for "bridging". Bridging, unlike "bonding," is reaching beyond people like ourselves. Bonding is getting along with people like ourselves; those of us who are not poor, minority, or uneducated are good at bonding. But we also need bridging, to get to know and understand people who are not like ourselves.

Why is bridging more important today? First, we tend to move around more nowadays, and leave family and old friends behind. Our communities lack long-standing shared experiences. Ms. Hansen referred to Floridian transplants as "potted plants"

who lack deep roots in their new communities. Second, technology makes it more possible for us to isolate ourselves from one another: we can watch TV or movies at home rather than at a gathering place. Third, e-mail or text-messaging tends to strip away the traditional forms of civil address such as "Dear..." and "Yours sincerely..." and the



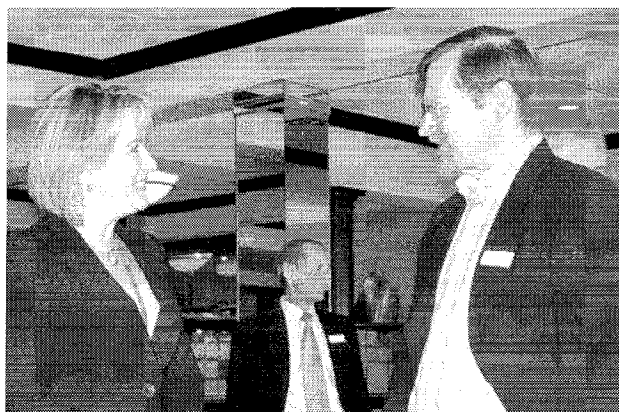
Ms. Teri Hansen delivers a spirited address to attentive members of the Club

coolness of the electronic medium may lead to brusque and impolite forms of speech. Fourth, there is some evidence from scholarly studies that abrupt or impersonal forms of communication are effective in commerce and politics. Ms. Hansen recounted a recent exchange between our local U.S. Congress member Vern Buchanan and Christine Jennings, the rival he narrowly defeated in the last election. He reportedly asked whether she would promise to run a civil campaign in 2008 if he made the same promise to her. Her reported answer: "Certainly not. Civility doesn't win!" A similar point was made by Yale's Prof. Gregory Huber at last month's Yale-Harvard-Princeton annual luncheon.

Ms. Hansen called on Club members to create some "social capital"—the means by which civility is transferred in times of need—by standing up for two minutes from their chairs at the luncheon and introducing themselves to someone that they did not

know. She described this process as "Get to Coffee" with the idea that you would find someone pleasant enough to join at a later time for coffee. She ran the same experiment at the Ivy League luncheon in 2007, and that club repeated it one or two times at subsequent meetings.

According to studies by Harvard's Robert Putnam, Ms. Hansen reported, social connections are



Ms. Hansen and Chris Angermann enjoy a most civil discussion

the best objective indicator of health and longevity. In one survey, subjects were asked to count how many people each would confide in if something terrible were to happen, such as a diagnosis of an incurable disease. Women averaged twelve, but men only six.

During the questions after Ms. Hansen's prepared remarks, Club member Dr. Mark Magenheim told of a man in an airport whose son fell ill. Three people offered, in turn, to stay with the boy while the father went to a phone or to get help from the airport authorities. But the father was afraid to accept help. Mark suggested that part of the trouble was sensationalist reporting in the media about bad things happening to those who accept favors from strangers.

Ms. Hansen and Club member Prof. Peter French (of USF's Sarasota-Manatee Institute for Public Policy and Leadership) referred to the joint lecture series "Civility in Democracy: Election 2008". Their April speaker, who will also address the Yale Club on April 17, is our friend Bob Semple, 'Y59.

Our March 20 audience was attentive and asked Ms. Hansen numerous well-considered questions as long as time permitted.

Dyer S. Wadsworth

LOCAL STUDENTS ACCEPTED TO CLASS OF 2012 AT YALE

The Alumni Schools Committee, under the able leadership of Wes Finer, has completed another successful year, and two local students have been accepted and will be attending Yale College in the fall. It was reported that there were a total of 29 applications from area schools. All candidates were interviewed by Club members in support of their applications. Of more than 23,000 applicants, only 1839 letters of admission were extended by the Yale Admissions Office, slightly more than 8% of those applying.

Ms. Dacie Thompson of St. Stephen's Episcopal School in Bradenton is excited to be going to New Haven. Dacie has diverse interests with an extensive expertise in Latin that has led to her attending conferences across the nation. This is balanced by a more prosaic interest in NASCAR, an interest shared



Dacie Thompson with Wes Finer

by Robert Semple, who was our speaker for the April luncheon. Dacie is intending to major in environmental engineering.

Mr. Colin Kruger is currently completing the International Baccalaureate program at Riverview High School in Sarasota. Colin's exceptional record as a scholar is balanced by his prowess on the football field. At 6'5" and nearly 300 pounds, it is anticipated that Colin will be a welcome addition to the Bulldogs offensive line for the next four years.

The Club is proud to have the Suncoast represented by such outstanding students and extends

Continued page 7

SUNSET ON THE BAY COCKTAIL PARTY

Nearly 100 Blues gathered for a wondrous display of good food, drink, great fellowship and perhaps the most gorgeous evening of the season at the beautiful home of Beverley and Dyer Wadsworth. Aptly named "Sunset on the Bay" because of the spectacular view of the sun sinking over Longboat Key, the occasion was a huge success.

Everything about the event was perfect. The painting by Betty Griggs on the invitation beckoned us to a beautiful scene. The music of bass guitarist John Miller, Principal Contrabass of the Florida West Coast Symphony, and guitarist Mark Manino complemented the camaraderie, good cheer and natural beauty of the setting.

Bev Wadsworth was everyone's favorite hostess as she effortlessly moved with superb grace through the small groups encouraging people to mix and meet their fellow Blues. When the sun actually set at its new late hour on Daylight Savings Time, many were still enjoying the soirée. It will be a treasured memory for all who were fortunate enough to attend.

Nick Gladding



Jack Embersits and Frank Pfaffenberger
enjoy the evening, the excellent company, the sparkling Sarasota Bay view and the approach of sunset.

Bev Collingwood selects from a bountiful array of foods before joining friends at a table under the pristine white tent on the lawn.



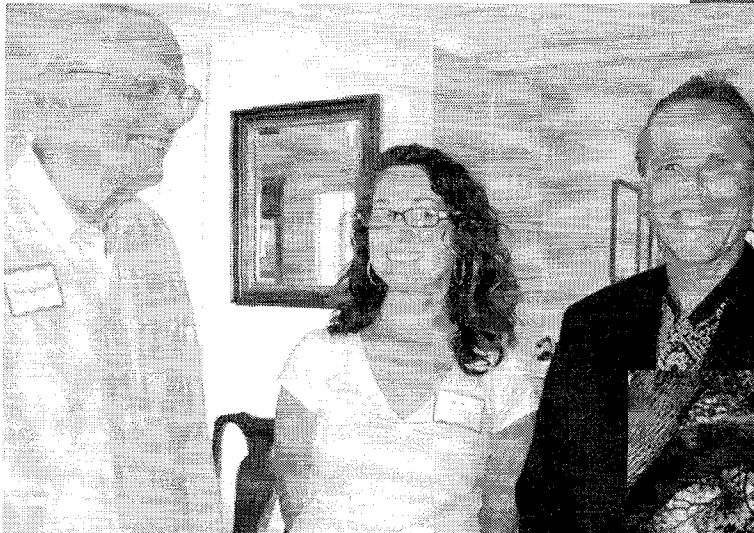


left

Hostess Beverley Wadsworth speaks with Pamela Hughes in the midst of a most happy gathering.



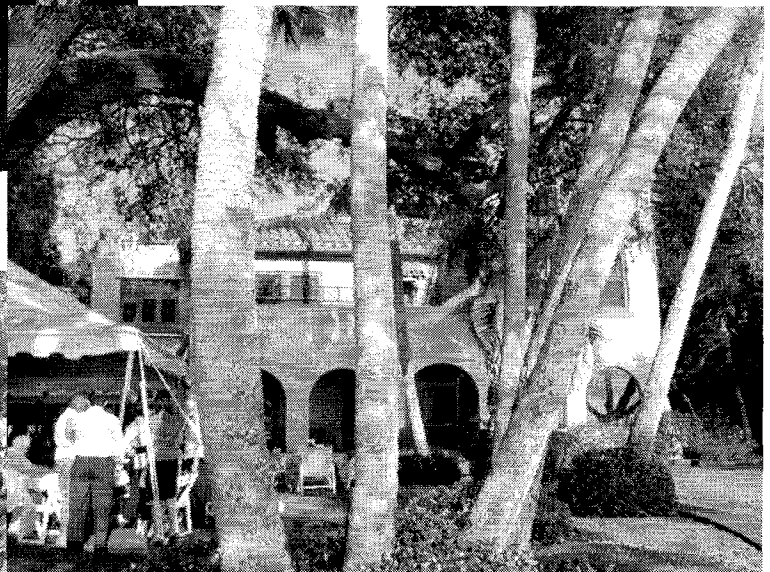
right **Sisters Liz Pitts and Lori Stearns enjoy the evening among friends.**



left

Dyer Wadsworth greets Leslie Fuenck and Mike Lasche

right **The gracious Wadsworth home, scene of *Sunset on the Bay*.**



left

Betty Griggs chooses a table in the midst of good friends for an evening of Yale fellowship on Sarasota Bay.

Note from Wes Finer

There were 29 applicants to Yale from our five counties this year. The final results were two accepted and three put on the "wait list." The two students accepted were Dacie Thompson from St. Stephens Episcopal School in Bradenton and Colin Kruger from the International Baccalaureate Program at Riverview High School in Sarasota. Yale again this year had a record number of applicants, totaling over 22,000. With the ever-increasing number and quality of the applicant pool, we suspect that very few, if any, of the "wait list" students will be offered admission.

Wes Finer

NATIONAL CITY PRIVATE BANKING GROUP: WELCOME

We are pleased that the Private Banking Group of National City Bank, with offices at 240 Pineapple Avenue, has agreed to support the Club by placing an advertisement in our 2009 Annual Membership Directory. Matthew Bower, Senior Vice President and Market Executive, has indicated a multi-year commitment and three years have been discussed.

This new relationship replaces the prior support by Bank of America for which we are grateful. Matthew is no stranger to the Yale Club of the Suncoast since he was the senior executive with Fleet Bank when they sponsored the Club for several years in the early part of the 2000's. We welcome our renewed relationship with Matthew.

BOB SEMPLE RETURNS LARGE CROWD ASSEMBLES



***bluELines* Editor Liz Troutman, New York Times Associate Editor Bob Semple, and Past President Peter French chat**

On April 15th, Bob Semple '59, Associate Editor of the New York Times editorial page for two decades, returned to the Club to share his personal musings on the presidential election cycle. This appearance completes a three-year "trifecta" of superb presentations to the Club dealing with environmental issues, the future of newspapers and now a discourse that demonstrated the care and attention the Times devotes to considering the candidates.

Bob started his remarks by comparing his first opportunity to vote in a presidential election and the disjuncture he created with his father over his choice that apparently healed over time. Those faraway days were compared to the present where the issues are supremely more serious and the challenges for the person who would be president of far greater magnitude. To illustrate the resources each of three candidates brings to the task, Bob did an analysis of each candidate: McCain, Clinton and Obama, identifying strengths and areas of performance where each will have to improve if they hope to triumph in the fall general election. McCain, of course, is the nominal candidate of the Republicans. The Democratic choice is far more intriguing and had much more scrutiny. Bob indicated that one of the issues for Obama is a condition that has plagued the Democrats in the past, the perception of elitism or social distance of the candidate from working class America. At the end, in the most speculative of terms to which he was willing to commit no personal resources, Bob thought Obama has a very strong chance. Oh, if he could have had the prescience that has come with the Pennsylvania primary and its revision of the prevailing calculus of choice.

By acclamation, the Club voted Bob honorary membership and indicated they would anticipate his return next year.

Peter French

ANOTHER SEMPLE SUMMARY

"Election Musings" of Robert Semple

Thursday, April 17, 2008 brought out nearly 100 sons and daughters of Eli to the Sarasota Yacht Club for a luncheon to hear Bob Semple, Executive Editor of the New York Times provide an insightful view of the 2008 Presidential election struggle. Artfully titled "Election Musings," Bob shared for the fourth straight year his political acumen with the Yale Club of The Suncoast. After discussing the strengths and weaknesses of the three remaining candidates in the race, Mr. Semple, a self-proclaimed Republican, stated he thought Barack Obama would be the next President of the United States. Let's examine how Mr. Semple reached this conclusion.



First, Bob indicated that he was a member of the "Luckiest Generation", who unlike today's superstars with perfect SAT scores, were able to get into Yale and enjoy a great time between wars. He shared with us that, although he was a registered Republican, his first vote in a Presidential Election was for a Democrat, John F. Kennedy, which when he announced his vote to his father, immediately caused the latter to retire to the bar for another round of martinis. Bob then asked us to "fast forward" almost 50 years. The country is a quite different place with war in Iraq, instability in North Korea and Iran, and an economy stressed with the loss of manufacturing jobs.

The three people seeking to lead us in these turbulent times are a woman, a black man and the oldest man to be a Presidential candidate. Although this may be unsettling to some, Bob said these choices deeply reaffirm the conclusion that America is truly the land of opportunity. He discussed how the NYT Editorial Board voted 18-0 to endorse John McCain as the Republican nominee and 12-6 to endorse Hillary Clinton as the Democratic nominee over Barack Obama. Bob mentioned he was one of the 6 votes for Obama and he had also voted for McCain.

John McCain, according to Mr. Semple, has experience, character and flexibility. He is not easily pigeonholed and is a fairly independent guy with a strong temper.

Bob indicated that Hillary Clinton is one of a long list of Democrats that the NYT had endorsed, starting with FDR. He mentioned she had done a good job as a New York Senator and was a "policy wonk." Obama was more of an enigma but offered the promise of real change, although Bob acknowledged there was "much to be said for a thin resume." Two months after these initial NYT votes, Semple asked what had changed and the answer was not much. Hillary Clinton can still talk endlessly

on just about any topic, is more sure footed on the debate stage and Obama seems to "flounder" upon complex questions such as the capital gains tax.

As far as character goes, Bob thinks Hillary is "very tough" but much angrier than he expected. He thinks she believes 2008 was to be her year, and that she would get her shot at being the first female president. Then "out of left field" comes this young, black Illinois legislator, who is famous for one speech and one book. That may explain her "sad look" but Mr. Semple says you have to admire her spunk and her ability to recreate herself as a blue collar hero: "Rosey the Riveter." Her rejuvenation in Texas and Ohio according to Semple, wouldn't have been possible without the "complicity of Mr. Obama himself."

Nick Gladding

However, all this aside, Bob Semple believes like many others that there is dynastic fatigue from Bush-Clinton-Bush years and he says he is tired of partisan conflict. Obama's promise is that he will give us something new, no more old politics, no more culture wars and no more "swaggering and bullying" abroad. Semple mentioned Obama's vulnerabilities as inexperience, race and elitism. Experience "a la Cheney and Rumsfeld" can be overrated, he states. Race is unavoidable but "elitism" could be a much more damaging charge against Obama. Mr. Semple said that the American people cannot understand and cannot connect with someone they perceive as elite. It is not only annoying but it is seen as effete and lacking in leadership. He mentioned that the Democrats have selected other candidates who have fallen into this trap such as Kerry, Gore, Sargeant Shriver and Dukakis. He summed it up by saying Obama has to avoid being pigeonholed as some kind of "effete smarty pants." He concluded by saying Hillary Clinton needed to win by at least 8-10 points in Pennsylvania in order to go on, because the state was made to order for her. Unfortunately, her gaffe about landing under enemy fire in Bosnia renews people's general distrust of the Clintons.

Mr. Semple thinks that whoever wins the Democratic race will be a "big problem for McCain because the Democratic candidate will make the election a referendum on the Bush Administration." On balance, Bob Semple thinks Barack Obama will win the Presidency in 2008. He didn't say whether he would follow his choice of JFK with a vote for BHO.

It was a terrific, insightful speech and we would all welcome back Bob Semple and his wife, Lisa Semple, to Brian Kelly's "Yale Club in Paradise" next year to see how his prediction turns out.

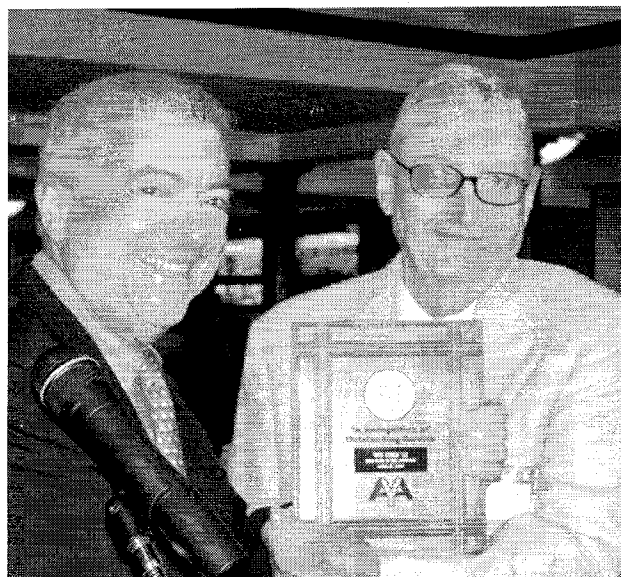
Nick Gladding

Cont'd from pg. 2

its congratulations to both Colin and Dacie for their achievements to date, and we believe they will make outstanding contributions while in New Haven.

Peter French

Yale AYA Club Recognition Award presented to Wes Finer



At our YCS Annual Meeting on April 17th, Brian T. Kelly presented the Yale AYA Club Recognition Award to Wes Finer, Y'52. This honor was offered in recognition of Wes's total of four years as President of the YCS, as well as his many years as Chair of the Alumni Schools Committee. Kelly also stated that Wes was being honored for his "indefatigable dedication" to the recruitment of highly talented students from the 32 secondary schools located in the five county YCS area as well as his "steadfast commitment" to the annual Yale Book Awards made to those schools. Kelly closed by thanking Wes for giving so much of himself to the Yale cause. The heartfelt applause of the many members who, over many years, have known his calm, quiet, steady service to Yale attested to our pride in his accomplishments.

Brian T. Kelly



**OLIVER
JANNEY**

As the cost of an education in much of the Florida State University System rises, the cost of a Yale education is falling. In January President Levin announced that Yale was reducing the average cost of a Yale education by over 50% for families with financial need. Families with income of less than \$60,000 per year will pay no tuition, room and board, while those earning between \$60,000 and \$120,000 will typically have to contribute only 1% to 12% of family income. The costs for students in families with over \$120,000 of income will average 10% of that income.

THE VALUE OF A YALE EDUCATION

This change was presented as a logical conclusion of Yale's pioneering efforts in 1966 to establish need-blind admissions. This move should make Yale an increasingly attractive alternative to the state system as well as many of Yale's direct competitors.

If you know of any bright candidates for Yale, you are encouraged to let them and their parents know about the bargain of a Yale education today. Or you can put them in touch with Peter French, the new Chair of the Alumni Schools Committee.

Oliver Janney

**bluELines is the official
newsletter of the Yale Club of
the Suncoast.**

Editor: Elizabeth A. Troutman

Phone: (941) 751-0962

**Address: 723 Oakview Drive,
Bradenton, FL 34210**

Annual Meeting Election :Yale Club of the Suncoast

Thursday, April 17, 2008

President Brian T. Kelly opened the Annual Meeting of YCS members by announcing that the Board of Directors accepted the recommendation of the Executive Committee and nominated the following persons to serve as directors for three-year terms:

Arthur W. Engelhard '52G
Nicholas C. Gladding '67
Ronald Levin '58
Henry C. Riley '54

The membership unanimously voted in favor of the approval of the nominees.

Immediately following the luncheon Peter L. French presented the slate of officers recommended by the Executive Committee as follows:

President	Brian Thomas Kelly
Vice President	Oliver J. Janney
Secretary	Nicholas C. Gladding
Treasurer	Ronald Levin
Administrative Officer	David D. Gleason
Assistant Secretary	Edward V. Williams
Assistant Treasurer	Daniel C. Conway
Chair, Membership	Beverley Wadsworth
Assistant Chair,	
Membership	Betty F. Griggs
Chair, Alumni Schools Committee	Peter L. French
Assistant Chair, Alumni Schools Committee	Patrick B. Whelan
Newsletter Editor	Elizabeth Troutman
Newsletter Assistant	Gilbert Waters
Manager, Luncheon Coordinators	Oliver J. Janney
Luncheon Coordinators	William A. Doyle
	Ronald Levin
	Edward V. Williams
	Daniel C. Conway
	Arthur W. Engelhard
	Mark W. Hamilton
	D. Richard Smith
AYA Representative	Dyer S. Wadsworth
Administrative Officer	David D. Gleason

On motion made and seconded, the foregoing persons were elected to the designated offices and positions for the 2008-2009 term. President Kelly expressed complete confidence that this array of officers had the experience and enthusiasm to assure the future success and growth of our Yale Club which is held in the highest esteem by the Yale AYA.



PRESIDENT KELLY'S ANNOUNCEMENTS

• A Presidential Thank You!

Sons, Daughters and loved ones of Eli Yale! By the time our beloved bluELInes Publisher, Liz Troutman, conveys this issue to you, we will have experienced eight stellar Yale Club of the Suncoast luncheons with eight memorable speakers, two very "special events," and great globules of Eli camaraderie. This Saybrugian will have completed his first year as YCS President. We often talk about the unique quality of our Club's membership and how it is so dedicated and so wonderfully open and spontaneous. I believe this to be very

true, and I therefore treasure the role you have entrusted to me of being President. We are proud of our 150 active Eli members, a most effective Yale student recruitment and award program for students in 32 secondary schools in our five county area, a strong Club financial position and an intellectually varied program of monthly speakers and, finally, the pride of the AYA – our powerful communication vehicle bluELines. All of this is thanks to the time, efforts and beneficence of you members. I thank you for your participation and support for all of the above.

As for the future, I will continue my dedication to assure the continued vitality of our programs. Critical to this is a sparkling array of alluring luncheon speakers. This is most easily accomplished with strong support from members who offer their interest and recommendations. While the Executive Committee (two former Club Presidents, the Vice-President and BTK) and your Board of Directors are quite creative, we continue to need your help. Please send your suggestions, critiques or specific recommendations to me or any Board member. I assure you they will be well received. Keep in mind this is your Club. Thank you in advance for your help.

● 2008-2009 YCS Meetings at Marina Jack

the Sarasota Yacht Club management notified us that it was embarking on a rebuilding program. The existing structure will be demolished and new construction will be completed no sooner than 18 months thereafter. We initiated a search for a replacement venue which would assure the best possible convenience and quality to our membership at competitive costs.

Marina Jack (M.J.), located at Bay Front, Sarasota, quickly became the obvious solution to our quest. YCS has been quite pleased with our summer Drop-In Luncheon programs at Marina Jack as well as several special events. The M.J. management, which is well known to many Club members, expressed a strong interest in achieving the YCS monthly luncheon business. In spite of significant inflation in food costs, the move to Marina Jack provides assurance of the same high quality luncheon while preserving the \$20 member cost. With this input, your Board has approved an agreement with Marina Jack for the forthcoming Yale Club season beginning in November 2008 and

extending through 2009. We are confident that you will find Marina Jack to be an excellent site for our meetings. For your long range calendar the dates for our future meetings are:

2008

November 11

December 9

2009

January 13

February – Y/H/P Luncheon

March 10

April 14

May 12

November 17

December 8

The January, March, April and May 2010 luncheons would be on the second Tuesday of each month.

Nota Bene: THE SECOND TUESDAY OF THE MONTH = YALE CLUB LUNCHEON

• YCS Summer Drop-In Luncheons are held at Marina Jack
We highly encourage you to attend one or all of the summer Yale Club “Drop-In Luncheons” which begin on June 10th and will occur every 2nd Tuesday of the month. Be on the look-out for your email notice or post-it card which will indicate the appropriate luncheon coordinator to call or email for a reservation. Socializing begins at 11:30 AM with lunch served at noon. Lunch and drinks are ordered from the regular menu and separate checks will be provided. Marina Jack has elevator service to the upper floor restaurant. They recommend a dollar or two as a gratuity for the valet car attendants if you use that service. The casual and pleasant atmosphere of the restaurant provides a great opportunity for informal conversation with fellow club members.

Until we fellow Elis meet in May, all the best to the best,

Brian Thomas Kelly